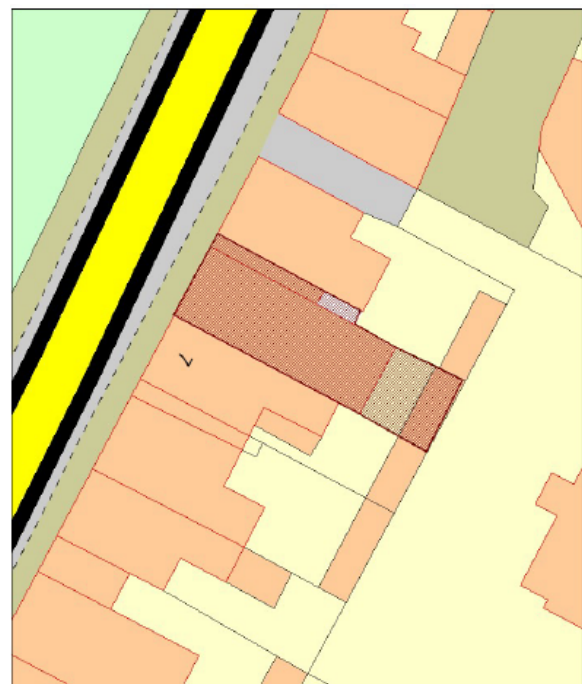
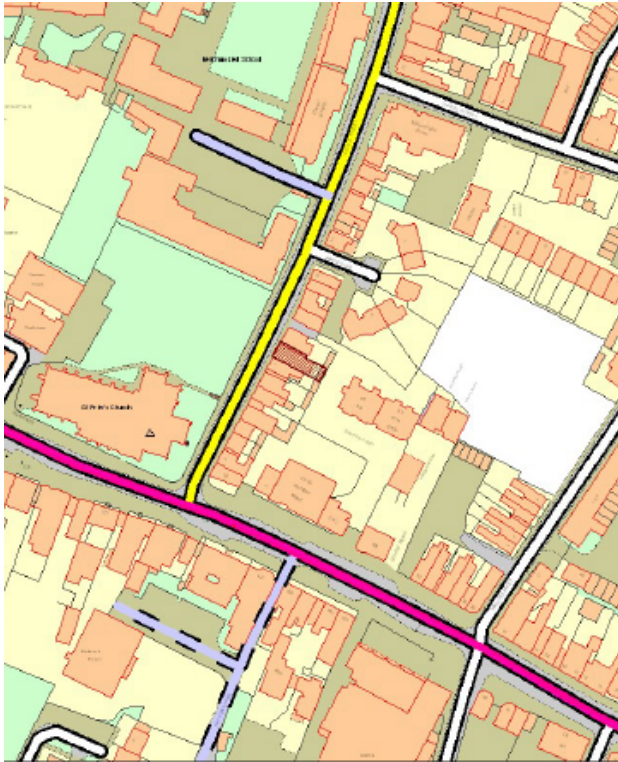


ITEM 5.08

4/03047/15/LBC - INTERNAL ALTERATIONS TO REPLACE PRINCIPAL ROOM FIREPLACE, MODIFY EXISTING EN-SUITE TO THE FIRST FLOOR, AND BOARD AND INSULATE LOFT FOR STORAGE

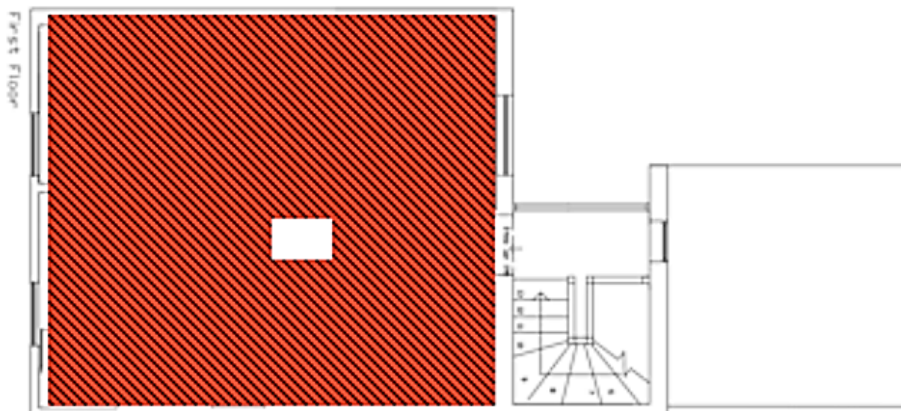
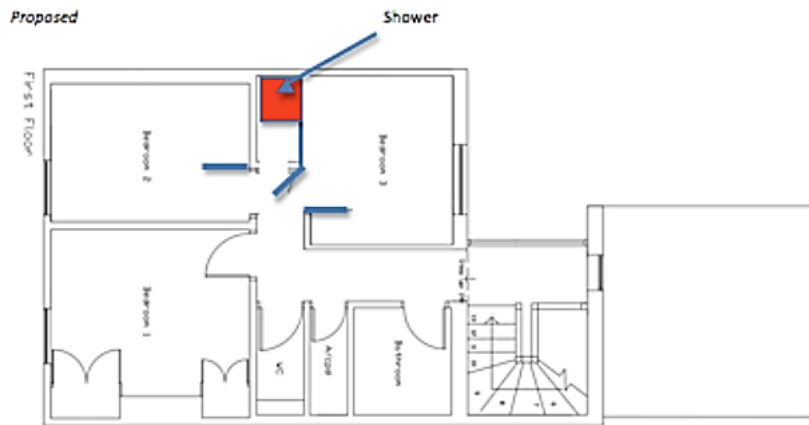
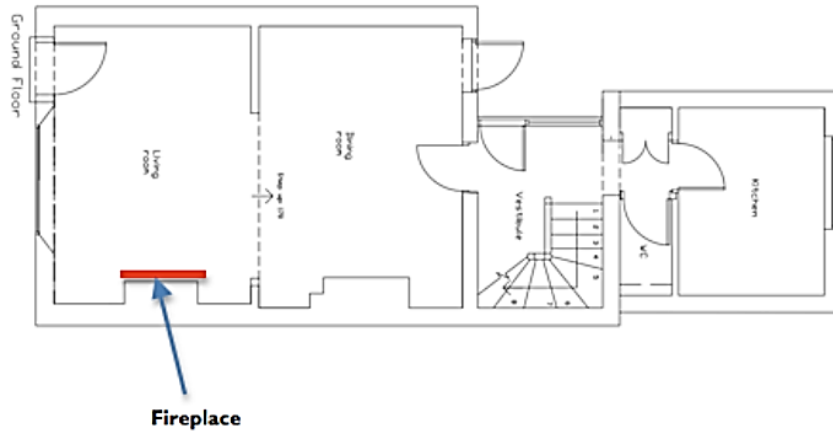
8 CASTLE STREET, BERKHAMSTED, HP4 2BQ



ITEM 5.08

4/03047/15/LBC - INTERNAL ALTERATIONS TO REPLACE PRINCIPAL ROOM FIREPLACE, MODIFY EXISTING EN-SUITE TO THE FIRST FLOOR, AND BOARD AND INSULATE LOFT FOR STORAGE

8 CASTLE STREET, BERKHAMSTED, HP4 2BQ



Area of Loft to be boarded
Existing loft hatch shown in white (to be retained)